

City to remove existing Electrical
Remove existing concrete
Electrolite base and install E.L.
Transformer in #5 pull box. Connect
to existing street light circuit.

Install Type B Standard
Type B mounting
in #5 pull box.

(City to remove existing Electrical)
Remove existing concrete
Electrolite base and install E.L.
Transformer in #5 pull box. Connect
to existing street light circuit.

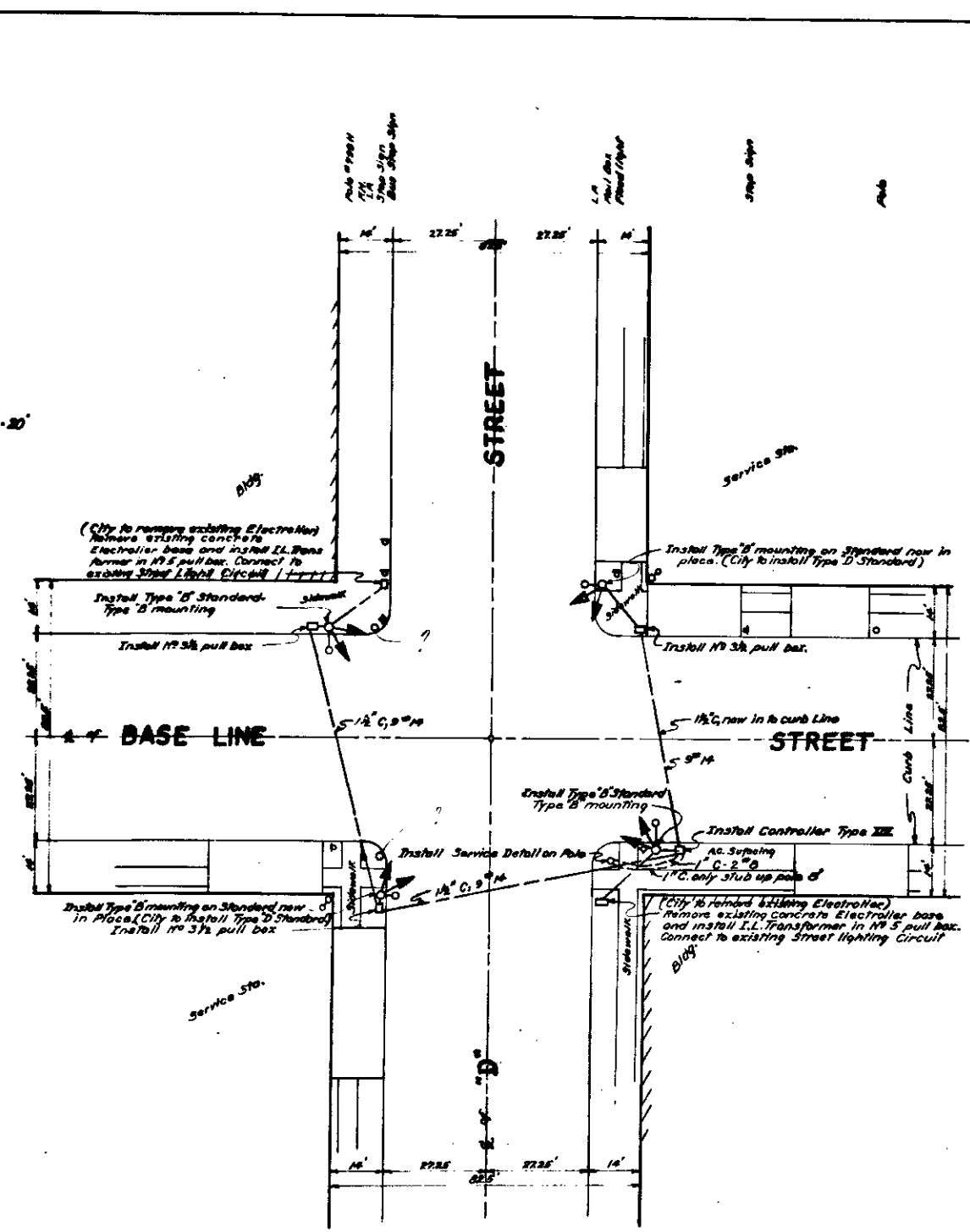
Install Type B Standard
and Type B mounting

(City to remove existing Electrical)
Remove existing concrete
Electrolite base and install E.L.
Transformer in #5 pull box.
Connect to existing street light circuit.

City to remove existing Electrical
Remove existing concrete
Electrolite base and install E.L.
Transformer in #5 pull box. Connect
to existing street light circuit.

City to remove existing Electrical
Remove existing concrete
Electrolite base and install E.L.
Transformer in #5 pull box. Connect
to existing street light circuit.

Scale 1"=20'



(City to remove existing Electrical)
Remove existing concrete
Electrolite base and install E.L.
Transformer in #5 pull box. Connect
to existing street light circuit.

Install Type B mounting on Standard row in
place. (City to install Type B Standard)

Install Type B Standard
Type B mounting
in #5 pull box.

Install #5 pull box.

BASE LINE

BASE LINE

Install Type B Standard
Type B mounting

Install Controller Type III

Install Service Detail on Pole

Install Type B mounting on Standard row
in place. (City to install Type B Standard)
Install #5 pull box.

(City to remove existing Electrical)
Remove existing concrete
Electrolite base and install E.L.
Transformer in #5 pull box.
Connect to existing street lighting circuit.

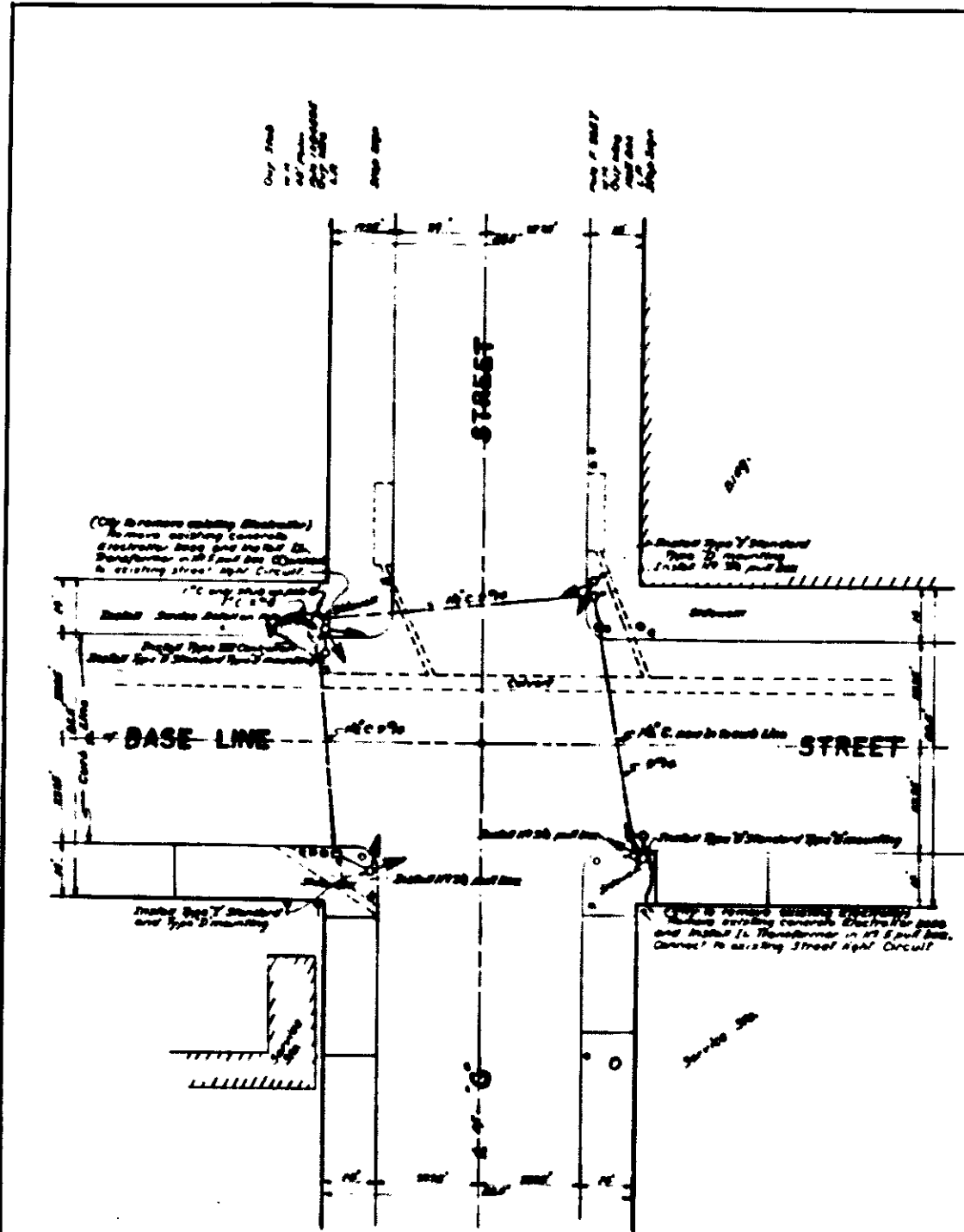
City to remove existing Electrical
Remove existing concrete
Electrolite base and install E.L.
Transformer in #5 pull box. Connect
to existing street light circuit.

City to remove existing Electrical
Remove existing concrete
Electrolite base and install E.L.
Transformer in #5 pull box. Connect
to existing street light circuit.

[Signature]
ACTING CITY ENGINEER
CIVIL ENGR. CERT. NO 3102

SIGNAL LOCATION PLAN

SHEET 2 OF 5 SHEETS



City to remove existing Electrical
Remove existing concrete
Electrolite base and install E.L.
Transformer in #5 pull box. Connect
to existing street light circuit.

Install Type 'D' Standard
Type 'B' mounting
Install #5 pull box

(City to remove existing Electrical)
Remove existing concrete
Electrolite base and install E.L.
Transformer in #5 pull box. Connect
to existing street light circuit.

Install Type 'D' Standard
Type 'B' mounting
Install #5 pull box

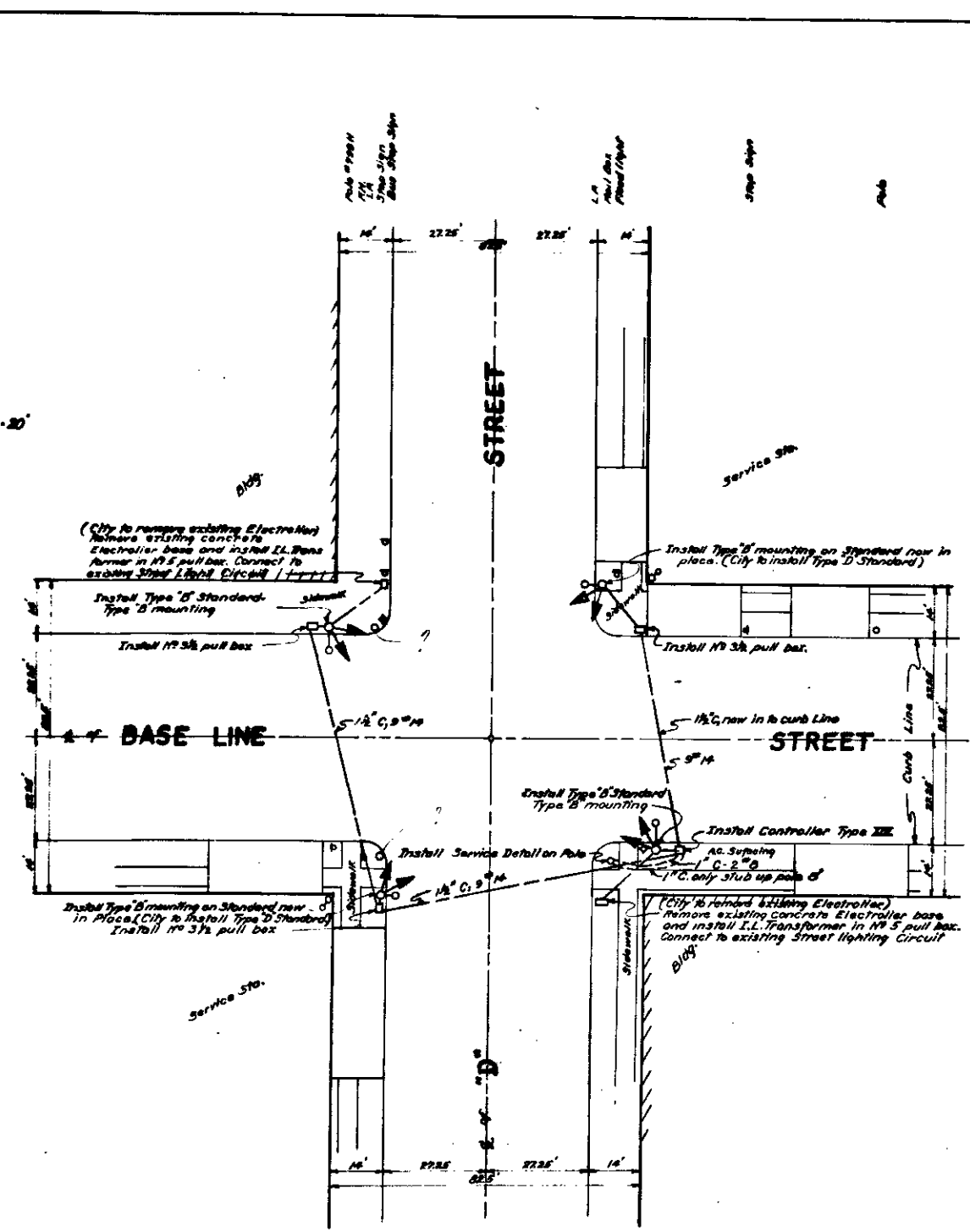
Install Type 'D' Standard
Type 'B' mounting
Install #5 pull box

(City to remove existing Electrical)
Remove existing concrete
Electrolite base and install E.L.
Transformer in #5 pull box. Connect
to existing street light circuit.

City to remove existing Electrical
Remove existing concrete
Electrolite base and install E.L.
Transformer in #5 pull box. Connect
to existing street light circuit.

City to remove existing Electrical
Remove existing concrete
Electrolite base and install E.L.
Transformer in #5 pull box. Connect
to existing street light circuit.

Scale 1"=20'



(City to remove existing Electrical)
Remove existing concrete
Electrolite base and install E.L.
Transformer in #5 pull box. Connect
to existing street light circuit.

Install Type 'D' Standard
Type 'B' mounting
Install #5 pull box

Install Type 'D' mounting on Standard row in
place. (City to install Type 'D' Standard)

Install #5 pull box

Install Type 'D' Standard
Type 'B' mounting
Install #5 pull box

Install Type 'D' Standard
Type 'B' mounting

Install Controller Type III

Install Service Detail on Pole

Install Type 'D' mounting on Standard row
in place. (City to install Type 'D' Standard)
Install #5 pull box

(City to remove existing Electrical)
Remove existing concrete
Electrolite base and install E.L.
Transformer in #5 pull box. Connect
to existing street lighting circuit.

City to remove existing Electrical
Remove existing concrete
Electrolite base and install E.L.
Transformer in #5 pull box. Connect
to existing street light circuit.

City to remove existing Electrical
Remove existing concrete
Electrolite base and install E.L.
Transformer in #5 pull box. Connect
to existing street light circuit.

[Signature]
ACTING CITY ENGINEER
CIVIL ENGR. CERT. NO 3102

SIGNAL LOCATION PLAN

SHEET 2 OF 5 SHEETS